



# GAT MONTHLY MEMBERSHIP PROGRESS REPORT

Results as of: 2/28/2022

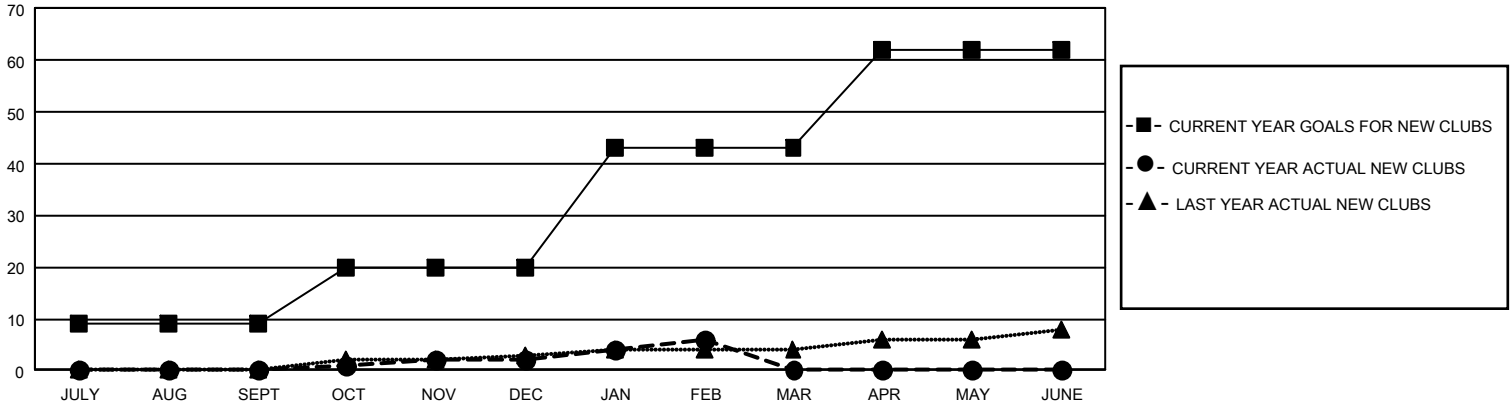
## GAT Constitutional Area 5 - Japan

REPORT DOES NOT INCLUDE CLUBS IN UNDISTRICTED AREAS.

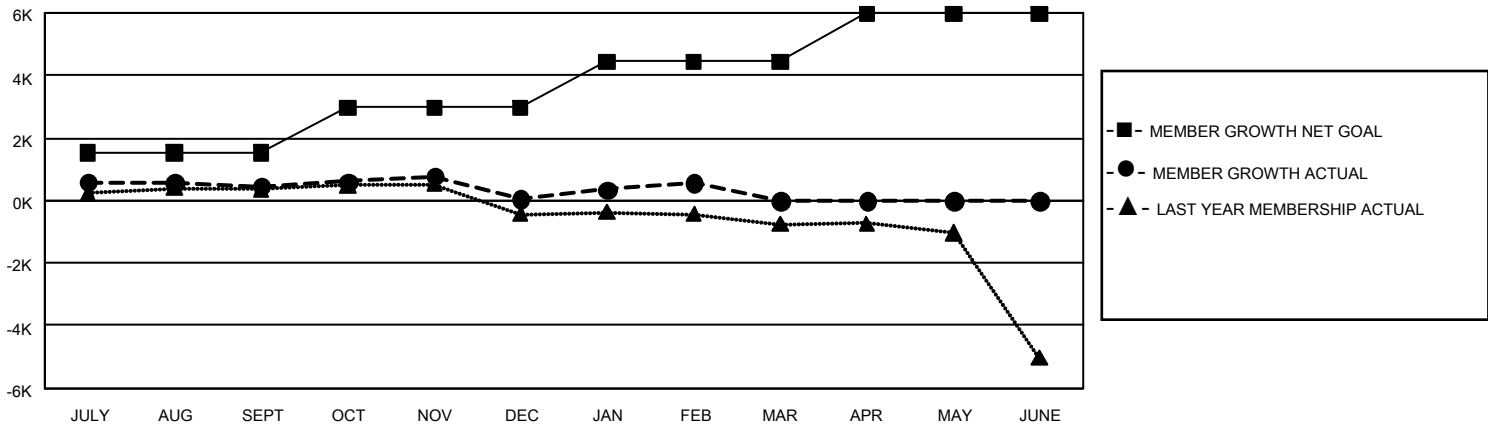
Clubs			
RESULTS FOR 2021-2022			
QUARTER	NEW CLUB GOAL	NEW CLUBS	DROPPED CLUBS
JULY/AUG/SEPT	27	0	5
OCT/NOV/DEC	33	2	10
JAN/FEB/MAR	69	4	3
APR/MAY/JUNE	57	0	0

Members			
RESULTS FOR 2021-2022			
QUARTER	MEMBER GROWTH NET GOAL	MEMBER GROWTH ACTUAL	DROPPED MEMBERS ACTUAL (including transfers)
JULY/AUG/SEPT	1540	1,942	1,350
OCT/NOV/DEC	1435	1,429	1,776
JAN/FEB/MAR	1461	1,222	688
APR/MAY/JUNE	1540	0	0

GOALS AND ACTUAL NEW CLUBS CUMULATIVE



GOALS AND ACTUAL MEMBERS CUMULATIVE



DROPPED CLUBS: 18	1,552 CLUBS OF 2,856 ADDED 1 OR MORE NEW MEMBERS	<b>GENDER DISTRIBUTION</b>
<b>DROPPED MEMBERS</b>	<a href="#">CLICK HERE FOR CUMULATIVE MEMBERSHIP DATA</a>	MALE 78,017 (76.43%)
DECEASED 577		FEMALE 24,054 (23.57%)
CLUB CANCELLED 45		NON BINARY 0 (0.00%)
OTHER 3,192		PREFER NOT TO ANSWER 2 (0.00%)
<b>TOTAL 3,814</b>		TOTAL FAMILY UNIT MEMBERS 35,505
		FAMILY MEMBERS PAYING HALF DUES 19,664